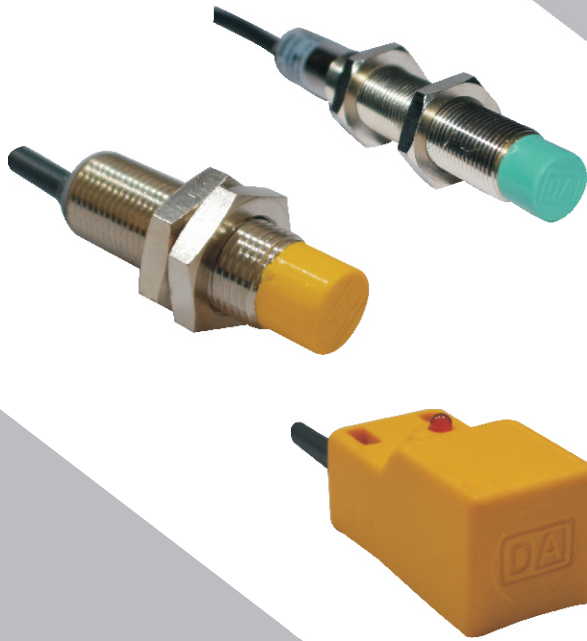




Appreciating Quality Automation



- ⌘ PID / Auto Tune Controllers
- ⌘ Temperature Controllers
- ⌘ Counters
- ⌘ Timers
- ⌘ MCB Shape Din Rail Timers
- ⌘ Humidity Controllers
- ⌘ Process Indicators / Controllers
- ⌘ RPM Indicators / Controllers
- ⌘ Load Indicators / Controllers
- ⌘ IR / Photo Sensors
- ⌘ Inductive Sensors
- ⌘ Capacitive Sensors
- ⌘ Magnetic Sensors
- ⌘ Area Sensor / Light Curtain
- ⌘ Peripheral / Relay Units
- ⌘ DC Drives

PRODUCT CATALOGUE VOLUME - V



www.dolphinautomation.com



About Us

Dolphin Automation is a rapidly growing organization established with a vision to offer the best quality automation products and reliable sensors to customers across the globe. Our durable and dependable products are available at the most competitive prices. A large scale manufacturing capability has helped us establish our competitiveness in the global market.

The company owns well equipped manufacturing and research facilities. It is home to some of the most sophisticated technology. The state-of-the-art machinery and research facilities speak volumes of the quality and efficiency maintained in the products and the manufacturing process. This ensures, our customers get quality products at the lowest prices.



Contents:	Page No	Contents:	Page No
Inductive Proximity Sensors	2 - 8	Humidity Controllers	16 - 17
Photo Electric Sensors	9 - 10	Humidity + Temp Controllers	17
Relay / Control Units	10	Counters	17 - 18
Mark Sensors	10	Process Indicators	18
Through Beam Sensors	11	Timers	19
Slot Sensors	12	Load Ind & Controllers	20
Capacitive Sensors	12	RPM	20
Solid State Relays	13 - 14	Panel Meters	21
Float Switches	14	Tem. Indicators	22
PID Controllers	15	Din Rail Timers	22
Temperature Controllers	15 - 16	Buzzers	22

Inductive Proximity Switches

Inductive Proximity Switches are used for non contact detection of ferrous (metallic objects) which find a very wide application in industrial process control. They are the preferred choice for the majority of applications requiring accurate, non contact detections of metallic objects in machinery or automatic equipment. They work on electro Magnetic Principle and are resistant to atmospheric conditions like humidity, dust, oil, paint, etc. Low power consumption, availability in wide range of packages and low unit price has made them very popular in industry.

Types

Standard Cylindrical Type

Inductive Sensors are available from M-5 to M-80 Diameters.

M-5- Input Voltage DC (3 Wire)

Order Code	Range (mm)	Logic	O/P	Mounting	Voltage 5-40 V DC Max Load Current <300mA Voltage Drop <2V DC Leakage Current <8mA@12 V DC Switching Freq 1000Hz LED Indication, Reverse Polarity Protected,, Switching Impulse Suppression, PVC Cable,
N1AS1	1 mm	PNP	NO	FLUSH	
N1AS2			NC		
N1AR1		NPN	NO		
N1AR2			NC		

M-6.5- Input Voltage DC (3 Wire)

Order Code	Range (mm)	Logic	O/P	Mounting	Common Specs Voltage 5-40 V DC Max Load Current <300mA Voltage Drop <2V DC Leakage Current <8mA@12 V DC Switching Freq 1000Hz LED Indication, Reverse Polarity Protected, Over Load Protected Short Circuit Proof, Switching Impulse Suppression, PVC Cable,
N1.5 BS1	1.5 mm	PNP	NO	FLUSH	
N1.5 BS2			NC		
N1.5 BR1		NPN	NO		
N1.5 BR2			NC		

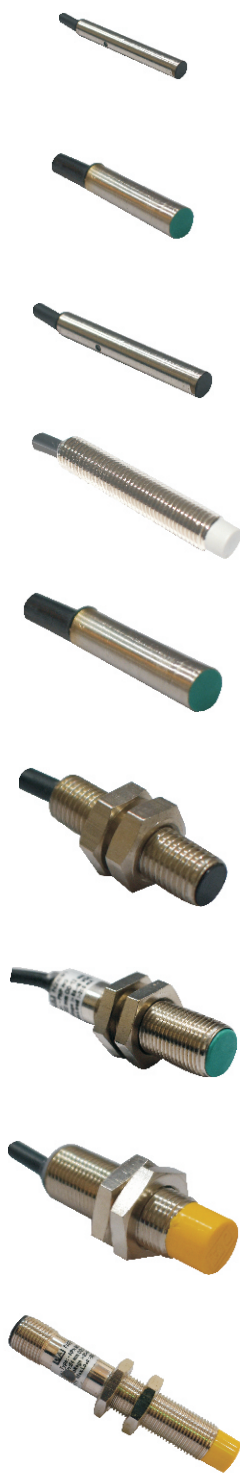
M-8 (Input DC Voltage DC 3 Wire)

Order Code	Range (mm)	Logic	O/P	Mounting	Common Specs Voltage 5-40 V DC Max Load Current <300mA Voltage Drop <2V DC Leakage Current <8mA@12 V DC Switching Freq 1000Hz LED Indication, Reverse Polarity Protected, Over Load Protected Short Circuit Proof, Switching Impulse Suppression, PVC Cable,
N1.5 CS1	1.5 mm	PNP	NO	FLUSH	
N1.5 CS2			NC		
N1.5 CR1		NPN	NO		
N1.5 CR2			NC		

M-12 (Input DC Voltage 3 Wire) STANDARD RANGE

Order Code	Range (mm)	Logic	O/P	Mounting	Frequency	Common Specs Voltage 5-40 V DC Max Load Current <300mA Voltage Drop <2V DC Leakage Current <8mA- @12 V DC Switching Freq 2000Hz LED Indication, Reverse Polarity, Protected, Over Load Protected, Short Circuit Proof, Switching Impulse Suppression, PVC Cable,
N2ES1	02 mm	PNP	NO	FLUSH	1000Hz	
N4ES1	04 mm			NON FLUSH	800Hz	
N2ES2	02 mm		NC	FLUSH	1000Hz	
N4ES2	04 mm			NON FLUSH	800Hz	
N2ER1	02 mm	NPN	NO	FLUSH	1000Hz	
N4ER1	04 mm			NON FLUSH	800Hz	
N2ER2	02 mm		NC	FLUSH	1000Hz	
N4ER2	04 mm			NON FLUSH	800Hz	

All the above models are available in connector type version with suffix "P" to the model number





Appreciating Quality Automation

M-12 (Input DC Voltage 3 Wire) LONG RANGE



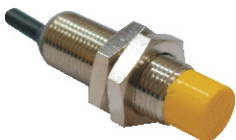
Order Code	Range (mm)	Logic	O/P	Mounting	Frequency	Common Specs
N4LRES1	04 mm	PNP	NO	FLUSH	500Hz	Voltage 10-35 V DC Max Load Current <300mA Voltage Drop <2V DC Leakage Current <8mA- @12 V DC Switching Freq 500Hz LED Indication, Reverse Polarity, Protected, Over Load Protected, Short Circuit Proof, Switching Impulse Suppression, PVC Cable,
N8LRES1	08 mm			NON FLUSH	300Hz	
N4LRES2	04 mm		NC	FLUSH	500Hz	
N8LRES2	08 mm			NON FLUSH	300Hz	
N4LRER1	04 mm	NPN	NO	FLUSH	500Hz	
N8LRER1	08 mm			NON FLUSH	300Hz	
N4LRER2	04 mm		NC	FLUSH	500Hz	
N8LRER2	08 mm			NON FLUSH	300Hz	

M-12 (Input DC Voltage DC 2 Wire) ECONOMY MODEL



Order Code	Range (mm)	O/P	Mounting	Frequency	Common Specs
N2EA1E/A2E	05 mm	NO/NC	FLUSH	25Hz	Voltage 10-35 V DC Max Load Current <200mA Voltage Drop <5V DC Leakage Current <1.5mA
N4EA1E/A2E	08 mm		NON FLUSH		

M-12 (Input AC Voltage 2 Wire) STANDARD MODEL



Order Code	Range (mm)	O/P	Mounting	Frequency	Common Specs
N2EW1E / W2	02 mm	NO or NC	FLUSH	25Hz	Voltage 20-250 V AC Max Load Current <500mA Voltage Drop <5V AC Leakage Current <1.5mA
N4EW1E / W2	04 mm		NON FLUSH		

M-12 (Input AC Voltage 2 Wire) ECONOMY MODEL



Order Code	Range (mm)	O/P	Mounting	Economy	Common Specs
N2EW1E / W2E	02 mm	NO or NC	FLUSH	25Hz	Voltage 90-250 V AC Max Load Current <200mA Voltage Drop <6V AC Leakage Current <1.5mA
N4EW1E / W2E	04 mm		NON FLUSH		

M-18 (Input DC Voltage 3 Wire O/P) STANDARD MODEL



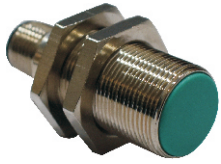
Order Code	Range (mm)	Logic	O/P	Mounting	Frequency	Common Specs
N5GS1	05 mm	PNP	NO	FLUSH	800Hz	Voltage 5-40 V DC Max Load Current <300mA Voltage Drop <2V DC Leakage Current <8mA- @12 V DC Switching Freq 2000Hz LED Indication, Reverse Polarity, Protected, Over Load Protected, Short Circuit Proof, Switching Impulse Suppression, PVC Cable,
N8GS1	08 mm			NON FLUSH	600Hz	
N5GS2	05 mm		NC	FLUSH	800Hz	
N8GS2	08 mm			NON FLUSH	600Hz	
N5GR1	05 mm	NPN	NO	FLUSH	800Hz	
N8GR1	08 mm			NON FLUSH	600Hz	
N5GR2	05 mm		NC	FLUSH	800Hz	
N8GR2	08 mm			NON FLUSH	600Hz	

All the above models are available in connector type version with suffix "P" to the model number



Appreciating Quality Automation

M-18 (Input DC Voltage 3 Wire) LONG RANGE



Order Code	Range (mm)	Logic	O/P	Mounting	Frequency	Common Specs
N8LRGS1	08 mm	PNP	NO	FLUSH	400Hz	Voltage 10-35 V DC Max Load Current <300mA Voltage Drop <2V DC Leakage Current <8mA- @12 V DC Switching Freq 500Hz LED Indication, Reverse Polarity, Protected, Over Load Protected, Short Circuit Proof, Switching Impulse Suppression, PVC Cable,
N16LRGS1	16 mm			NON FLUSH	200Hz	
N8LRGS2	08 mm		NC	FLUSH	400Hz	
N16LRGS2	16 mm			NON FLUSH	200Hz	
N8LRGR1	08 mm	NPN	NO	FLUSH	400Hz	
N16LRGR1	16 mm			NON FLUSH	200Hz	
N8LRGR2	08 mm		NC	FLUSH	400Hz	
N16LRGR2	16 mm			NON FLUSH	200Hz	

M-18 (Input DC Voltage DC 2 Wire) STANDARD MODEL

Order Code	Range (mm)	O/P	Mounting	Frequency	Common Specs
N5GA1/A2	05 mm	NO/NC	FLUSH	25Hz	Voltage 20-110 V DC Max Load Current <400mA Voltage Drop <7V DC Leakage Current <1.5mA
N8GA1/A2	08 mm		NON FLUSH		

M-18 (Input DC Voltage DC 2 Wire) ECONOMY MODEL

Order Code	Range (mm)	O/P	Mounting	Frequency	Common Specs
N5GA1E/A2E	05 mm	NO/NC	FLUSH	25Hz	Voltage 10-35 V DC Max Load Current <200mA Voltage Drop <5V DC Leakage Current <1.5mA
N8GA1E/A2E	08 mm		NON FLUSH		

M-18 (Input AC Voltage 2 Wire) STANDARD MODEL

Order Code	Range (mm)	O/P	Mounting	Frequency	Common Specs
N5GW1	05 mm	NO	FLUSH	25Hz	Voltage 20-250 V AC Max Load Current <500mA Voltage Drop <5V AC Leakage Current <1.5mA LED Indication, Switching Impulse - Suppression, PVC Cable,
N8GW1	08 mm		NON FLUSH		
N5GW2	05 mm	NC	FLUSH		
N8GW2	08 mm		NON FLUSH		

M-18 (Input AC Voltage 2 Wire) LONG RANGE

Order Code	Range (mm)	O/P	Mounting	Frequency	Common Specs
N8LRGW1		NO	FLUSH	25Hz	Voltage 20-250 V AC Max Load Current <500mA Voltage Drop <5V AC Leakage Current <1.5mA LED Indication, Switching Impulse - Suppression, PVC Cable,
N14LRGW1	14 mm		NON FLUSH		
N8LRGW2	08 mm	NC	FLUSH		
N14LRGW2	14 mm		NON FLUSH		

All the above models are available in connector type version with suffix "P" to the model number



Appreciating Quality Automation

M-18 (Input AC Voltage 2 Wire) ECONOMY MODEL



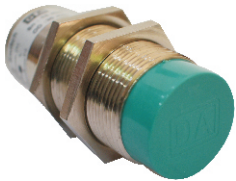
Order Code	Range (mm)	O/P	Mounting	Frequency	Common Specs
N5GW1E / W2E	05 mm	NO or NC	FLUSH	25Hz	Voltage 90-250 V AC Max Load Current <200mA Voltage Drop <6V AC Leakage Current <1.5mA
N8GW1E / W2E	08 mm		NON FLUSH		

M-30 (Input DC Voltage 3 Wire O/P) STANDARD RANGE



Order Code	Range (mm)	Logic	O/P	Mounting	Frequency	Common Specs
N10HS1	10 mm	PNP	NO	FLUSH	600Hz	Voltage 5-40 V DC Max Load Current <300mA Voltage Drop <2V DC Leakage Current <8mA- @12 V DC Switching Freq 2000Hz LED Indication, Reverse Polarity, Protected, Over Load Protected, Short Circuit Proof, Switching Impulse Suppression, PVC Cable,
N15HS1	15 mm			NON FLUSH	500Hz	
N10HS2	10 mm		NC	FLUSH	600Hz	
N15HS2	15 mm			NON FLUSH	500Hz	
N10HR1	10 mm	NPN	NO	FLUSH	600Hz	
N15HR1	15 mm			NON FLUSH	500Hz	
N10HR2	10 mm		NC	FLUSH	600Hz	
N15HR2	15 mm			NON FLUSH	500Hz	

M-30 (Input DC Voltage 3 Wire) LONG RANGE



Order Code	Range (mm)	Logic	O/P	Mounting	Frequency	Common Specs
N20LRHS1	20 mm	PNP	NO	FLUSH	200Hz	Voltage 10-35 V DC Max Load Current <300mA Voltage Drop <2V DC Leakage Current <8mA- @12 V DC Switching Freq 200Hz LED Indication, Reverse Polarity, Protected, Over Load Protected, Short Circuit Proof, Switching Impulse Suppression, PVC Cable,
N30LRHS1	30 mm			NON FLUSH	100Hz	
N10LRHS2	20 mm		NC	FLUSH	200Hz	
N30LRHS2	30 mm			NON FLUSH	100Hz	
N20LRHR1	20 mm	NPN	NO	FLUSH	200Hz	
N30LRHR1	30 mm			NON FLUSH	100Hz	
N20LRHR2	20 mm		NC	FLUSH	200Hz	
N30LRHR2	30 mm			NON FLUSH	100Hz	

M-30 (Input DC Voltage 2 Wire O/P) STANDARD MODEL



Order Code	Range (mm)	O/P	Mounting	Frequency	Common Specs
N10HA1/A2	10 mm	NO/NC	FLUSH	25Hz	Voltage 20-110 V DC Max Load Current <400mA Voltage Drop <7V DC Leakage Current <1.5mA
N15HA1/A2	15 mm		NON FLUSH		

M-30 (Input DC Voltage DC 2 Wire) ECONOMY MODEL

Order Code	Range (mm)	O/P	Mounting	Frequency	Common Specs
N10HA1E/A2E	10 mm	NO/NC	FLUSH	25Hz	Voltage 10-35 V DC Max Load Current <200mA Voltage Drop <5V DC Leakage Current <1.5mA
N15HA1E/A2E	15 mm		NON FLUSH		

All the above models are available in connector type version with suffix "P" to the model number

M-30 Input Voltage (2 Wire) AC - STANDARD RANGE



Order Code	Range (mm)	O/P	Mounting	Frequency	Common Specs
N10HW1	10 mm	NO	FLUSH	25Hz	Voltage 20-250 V AC Max Load Current <500mA Voltage Drop <5V AC Leakage Current <1.5mA LED Indication, Switching Impulse Suppression, PVC Cable,
N15HW1	15 mm		NON FLUSH		
N10HW2	10 mm	NC	FLUSH		
N15HW2	15 mm		NON FLUSH		

M-30 (Input AC Voltage 2 Wire) LONG RANGE



Order Code	Range (mm)	O/P	Mounting	Frequency	Common Specs
N15LRHW1	15 mm	NO	FLUSH	25Hz	Voltage 20-250 V AC Max Load Current <500mA Voltage Drop <5V AC Leakage Current <1.5mA LED Indication, Switching Impulse - Suppression, PVC Cable,
N25LRHW1	25 mm		NON FLUSH		
N15LRHW2	15 mm	NC	FLUSH		
N25LRHW2	25 mm		NON FLUSH		

M-30 (Input AC Voltage 2 Wire) ECONOMY MODEL



Order Code	Range (mm)	O/P	Mounting	Economy	Common Specs
N10EW1E / W2E	10 mm	NO or NC	FLUSH	25Hz	Voltage 90-250 V AC Max Load Current <200mA Voltage Drop <6V AC Leakage Current <1.5mA
N15EW1E / W2E	15 mm		NON FLUSH		

M-50 Input DC Voltage (3 Wire O/P) - STANDARD RANGE



Order Code	Range (mm)	Logic	O/P	Mounting	Frequency	Common Specs
N25KS1	25 mm	PNP	NO	NON FLUSH	300Hz	Voltage 05-40 V DC Max Load Current <300mA Voltage Drop <2V DC Leakage Current <8mA LED Indication, Reverse Polarity Protected, Over Load Protected Short Circuit Proof, Switching Impulse Suppression, PVC Cable,
N25KS2			NC			
N25KR1		NPN	NO			
N25KR2			NC			

M-50 Input DC Voltage (3 Wire O/P) - LONG RANGE



Order Code	Range (mm)	Logic	O/P	Mounting	Frequency	Common Specs
N50LRKS1	50 mm	PNP	NO	NON FLUSH	300Hz	Voltage 10-35 V DC Max Load Current <300mA Voltage Drop <2V DC Leakage Current <8mA LED Indication, Reverse Polarity Protected, Over Load Protected Short Circuit Proof, Switching Impulse Suppression, PVC Cable,
N50LRKS2			NC			
N50LRKR1		NPN	NO			
N50LRKR2			NC			

M-50 Input AC Voltage (2 Wire O/P) - STANDARD MODEL

Order Code	Range (mm)	O/P	Mounting	Frequency	Common Specs
N25KW1	25 mm	NO	NON FLUSH	25Hz	Voltage 20-250 V AC Max Load Current <500mA Voltage Drop <5V AC Leakage Current <1.5mA LED Indication, Switching Impulse Suppression, PVC Cable,
N25KW2		NC			

All the above models are available in connector type version with suffix "P" to the model number



Appreciating Quality Automation

M-50 Input AC Voltage (2 Wire O/P) - LONG RANGE



Order Code	Range (mm)	O/P	Mounting	Frequency	Common Specs
N40KW1	40 mm	NO	NON FLUSH	25Hz	Voltage 20-250 V AC Max Load Current <500mA Voltage Drop <5V AC Leakage Current <1.5mA LED Indication, Switching Impulse Suppression, PVC Cable,
N40KW2		NC			

M-50 Input DC Voltage (2 Wire O/P) STANDARD MODEL



Order Code	Range (mm)	O/P	Common Specs
N25KA1 / A2	25 mm	NO / NC	NON FLUSH, Vtg-20-110 Vdc, I _{max} -400mA, Voltage Drop <7V DC Leakage Current <1.5mA

M-50 Input DC Voltage (2 Wire O/P) ECONOMY MODEL

Order Code	Range (mm)	O/P	Common Specs
N25KA1E / A2E	25 mm	NO / NC	NON FLUSH, Vtg-10-35 Vdc, I _{max} -200mA, Voltage Drop <7V DC Leakage Current <1.5mA

Micro Switch Type



Order Code	Dimensions	Logic	Range	O/P	Common Specs
N4MBS1 / S2	50x20x18 mm	PNP	4mm	NO / NC	Voltage 05-40 V DC Max Load Current <300mA Voltage Drop <2V DC Leakage Current <8mA Frequency <600 Hz
N4MBR1 / R2		NPN			

Slot Type - Inductive



Order Code	Slot Width	Slot Depth	Logic	O/P	Common Specs
N5SLS1 / S2	05 mm	16 mm	PNP	NO/NC	Voltage 10-35 V DC Max Load Current <200mA Voltage Drop <2V DC Leakage Current <8mA Frequency <800 Hz
N5SLR1 / R2			NPN		
N10SLS1 / S2	10 mm	32 mm	PNP	NO/NC	
N10SLR1 \ R2			NPN		

Analogue - Output



Order Code	Range	OD	O/P	Common Specs
N10GAV	10 mm	M18	0-10 VDC	Voltage 15-40 VDC Linear Output Reverse polarity protected Low Leakage Current 3 Wire PVC Cable Mounting Non Flush
N10GAI	10 mm		0-20 mA	
N20HAV	20 mm	M30	0-10 VDC	
N20HAI	20 mm		0-20 mA	

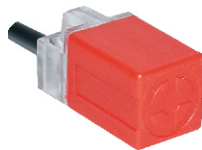
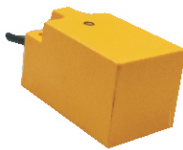
All the above models are available in connector type version with suffix "P" to the model number



Appreciating Quality Automation

Inductive- Block (Rectangular)

Order Code	Dimensions	Logic	O/P	Sensing	Common Specs
N8G36S1K / S2K	18x18x36 mm	PNP	NO / NC	08 mm	Voltage 05-40 V DC, Max Load Current <200mA, Voltage Drop <2V DC, Leakage Current <8mA, Frequency <600 Hz, Reverse Polarity Protected, Switching Impulse Suppression PVC Cable
N8G36R1K / R2K		NPN			
N5G26S1K / S2K	18x18x26 mm	PNP	NO / NC	05 mm	
N5G26R1K / R2K		NPN			
N8K50S1K / S2K	10x25x50 mm	PNP	NO / NC	08 mm	
N8K50R1K / R2K		NPN			
N15H54S1K / S2K	30x30x54 mm	PNP	NO / NC	15 mm	
N15H54R1K / R2K		NPN			
N8RK36S1K / S2K	18x18x36 mm	PNP	NO / NC	08 mm	
N8RK36R1K / R2K		NPN			
N8K56S1K / S2K	18x18x56 mm	PNP	NO / NC	08 mm	
N8K56R1K / R2K		NPN			
N8L4050RLK	10x40x50 mm	POTENTIAL FREE CONTACTS @3AMPS		08 mm	



Magnetic Switches

Order Code	Dimensions	Sn Range	Common Specs	
M15EW1 (2 Wire Sensors)	M-12	15 mm	2 Wire: * Switching voltage: upto 200 VDC * Switching Current: upto 500 mA * Contact Resistance: upto 150 mOhms * Operating Time: 1.0 mSec. * Wattage: 10 W	
M15ES1/R1 (3 Wire Sensors)				
N20GW1 (2 Wire Sensors)	M-18	20 mm		3 Wire / 4 Wire * Voltage: 10 to 35 VDC * Switching Current: upto 200 mA * NPN / PNP / NO / NC all Available * Short circuit, Reverse Polarity, Surge Supression Protection
N20GS1/R1 (3 Wire Sensors)				



Plugin / Connector Leads - M-8, M-12, M-18

- * L type / straight type
- * With LED / without LED

- * 4 Core cable, 2 mtr length
- * Cable Length can be customised

Photoelectric Sensors

Type- Diffuse Scan

Transmitter and receiver are in the same housing. The IR beam emitted by the transmitter is Received by the receiver and an output pulse is achieved.

Square Type Diffuse Sensors



Order Code	Range (mm)	Logic	O/P	Frequency	Common Specs
KSD500 S3	500 mm	PNP	NO+NC	400Hz	Voltage 10-35 V DC, Max Load Current <300mA Voltage Drop <2V DC, Leakage Current <12mA- @12 V DC Switching Impulse Suppression, Reverse Polarity & Over Load Protected
KSD500 R3			NPN NO+NC		
KSD500 U3			RELAY NO C NC 2 Amps	25Hz	Voltage 20-250 VAC/DC Max Load Current <2Amps 5 Wire

Square Type Thru beam Sensors



Order Code	Range (mm)	Logic	O/P	Frequency	Common Specs
KST5000 S3	5 mtr	PNP	NO+NC	200Hz	Voltage 10-35 V DC, Max Load Current <300mA Voltage Drop <2V DC, Leakage Current <12mA- @12 V DC Switching Impulse Suppression, Reverse Polarity & Over Load Protected
KST5000 R3			NPN NO+NC		

M-12 (Input DC Voltage 3 Wire)



Order Code	Range (mm)	Logic	O/P	Frequency	Common Specs
KD100ES1	100 mm	PNP	NO	400Hz	Voltage 10-35 V DC Max Load Current <300mA Voltage Drop <2V DC Leakage Current <12mA- @12 V DC Switching Impulse Suppression Reverse Polarity & Over Load Protected
KD100ES2			NC		
KD100ER1		NPN	NO		
KD100ER2			NC		

M-18 (Input DC Voltage 4 Wire) - LONG RANGE



Order Code	Range (mm)	Logic	O/P	Freq.	Common Specs
KD1000LRGS3	1000 mm	PNP	NO+NC	400Hz	Voltage 10-35 V DC Max Load Current <300mA Leakage Current <12mA @12 V DC Voltage Drop <2V DC Switching Impulse Suppression Reverse Polarity & Over Load Protected PVC Cable
KD1000LRGR3		NPN			

M-18 (Input AC Voltage 2 Wire)



Order Code	Range (mm)	O/P	Freq.	Common Specs
KD200GW1	200 mm	NO	25Hz	Voltage 90-250 V AC Max Load Current <400mA Voltage Drop <5V AC Leakage Current <4.5mA Switching Impulse Suppression PVC Cable
KD200GW2		NC		

Photoelectric Sensors



M-30 (Input DC Voltage 4 Wire) - STANDARD RANGE

Order Code	Range (mm)	Logic	O/P	Freq.	Common Specs
KD1000HS3	1000 mm	PNP	NO+NC	300Hz	Voltage 10-35 V DC Max Load Current <300mA Leakage Current <12mA @12 V DC Voltage Drop <2V DC Reverse Polarity & Over Load Protected PVC Cable
KD1000HR3		NPN			
All the above models are available in connector type version with suffix "P" to the model number, Example KD1000LRGS3P					



M-30 (Input DC Voltage 4 Wire) - LONG RANGE

Order Code	Range (mm)	Logic	O/P	Freq.	Common Specs
KD2000HS3	2000 mm	PNP	NO+NC	200Hz	Voltage 10-35 V DC Max Load Current <300mA Leakage Current <12mA @12 V DC Voltage Drop <2V DC Reverse Polarity & Over Load Protected PVC Cable
KD2000HR3		NPN			
All the above models are available in connector type version with suffix "P" to the model number, Example KD2000HS3P					



M-30 (Input AC Voltage 2 Wire)

Order Code	Range (mm)	O/P	Freq.	Common Specs
KD400HW1	400 mm	NO	25Hz	Voltage 90-250 V AC Max Load Current <400mA Voltage Drop <5V AC Leakage Current <4.5mA Switching Impulse Suppression PVC Cable
KD400HW2		NC		
All the above models are available in connector type version with suffix "P" to the model number, Example KD400HW1P				



Peripheral / Relay Units

(1) Namur Amplifier Relay Unit - NAU-1

- (a) Supply Voltage - 220 VAC / 110VAC \pm 10%
- (b) Supply Consumption - 2.3 VA
- (c) Sensor Supply - 8 VDC
- (d) Short Ckt Current - 8 mA

(2) Power Supply Relay Unit PSU-1

- (a) Supply Voltage - 220 VAC / 110VAC \pm 10%
- (b) DC O/P Voltage - 24V DC 12 V DC (Per Order)
- (c) LOAD I max - 200mA @ 12 VDC
100mA @ 24 VDC
- (d) Sensor - PNP or NPN

(3) On-Off Delay Timer with Relay Unit DPSU-1

- (a) Supply Voltage - 230 VAC / 110VAC \pm 10%
- (b) Power Consumption 3.5 VA
- (c) ON / OFF Delay Time - 30 Sec (Max)
Adjustable
- (d) O/P Voltage for sensors - 24 VDC / 100mA

(4) Liquid level controller Relay Unit LLC - 1

- (a) Supply Voltage - 220 VAC / 110VAC \pm 10%
- (b) Supply Consumption - 2.3 VA
- (c) Sensor - Float Switch/Probes
- (d) For High Level & Low Level Sensing

Common Specs

- (a) Relay O/P
Single change over
- (b) Contact Rating -
7 Amp / 230 VAC
- (c) Mounting - DIN RAIL
or Holes for screw fixing
- (d) Housing -
ABS Plastic Enclosure



MARK SENSOR



Order Code	DIMENSION (mm)	Logic	O/P	Freq.	Common Specs
KC10U	66X90X38	PNP & NPN BOTH	NO+NC	50Hz	Voltage 12-35 V DC Max Load Current <300mA Voltage Drop <2V DC Reverse Polarity & Over Load Protected Leakage Current <12mA @12 V DC Switching Impulse Suppression PVC Cable

Type- Thrubeam

Transmitter and Receiver are in separate housing facing each other with their optical areas. when ever the IR beam is interrupted a O/P Pulse is achieved.



Order Code	Diameter	Sn Range (Adj)	Remarks
KT4000GX	M-18	4 meters	Unit Contains two sensors one as transmitter other as receiver and a DIN RAIL Mount Control Box with a single change over relay O/P with a rating of 5 Amps/230 VAC
KT8000HX	M-30	7 meters	
KT4000GXD (with ON and OFF time delay)	M-18	4 meters	Unit Contains two sensors one as transmitter other as receiver and a DIN RAIL Mount Control Box with a single change over relay O/P with a rating of 5 Amps/230 VAC and two timing control POT adjustable up to 10 sec Providing ON delay and OFF Delay
KT8000HXD (with ON and OFF time delay)	M-30	7 meters	

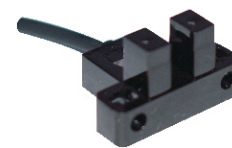
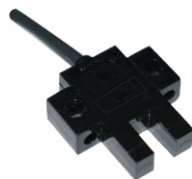


Type- Thrubeam (inbuilt Amplifier)



Order Code	Out. Dia	Sn (Adj)	Logic	O/P	Freq	Common Specs
KT4000GS1	M-18	4 meter	PNP	NO	50 Hz	Voltage 10-35 V DC Max Load Current <300mA Voltage Drop <2V DC Leakage Current <10mA Reverse Polarity Protected, Switching Impulse, Suppression, PVC Cable, Units contains two sensors one as transmitter other as receiver having in built amplifiers so that they can be connected directly to any external DC supply and an output load can be operated
KT4000GS2				NC		
KT4000GR1			NPN	NO		
KT4000GR2				NC		
KT8000HS1	M-30	7 meter	PNP	NO		
KT8000HS2				NC		
KT8000HR1			NPN	NO		
KT8000HR2				NC		

Type- Slot Sensor - IR



Order Code	Slot Width	Slot Depth	Logic	O/P	Spec.
K10SLS1 / S2	10 mm	32 mm	PNP	NO / NC	Freq. - 200 Hz VTG. 10-35 VDC I(max) 200 mA Housing: ABS
K10SLR1 / R2			NPN		
K20SLS1 / S2	20 mm	40 mm	PNP	NO / NC	
K20SLR1 / R2			NPN		
K50SLS1 / S2	50 mm	42 mm	PNP	NO / NC	
K50SLR1 / R2			NPN		

Capacitive Sensors

Capacitive Type sensors detects the presence of any dielectrics material in the proximity of its sensing face. The are used for detecting non metallic objects, liquid level and other automation application.



J04ES1	4 mm	M-12	PNP	NO	Voltage 10-35 V DC Max Load Current <300mA Voltage Drop <2V DC Leakage Current <8mA- @12 V DC LED Indication, Reverse Polarity, Protected, Over Load Protected, Short Circuit Proof, Switching Impulse Suppression, PVC Cable,
J04ES2				NC	
J04ER1			NPN	NO	
J04ER2				NC	
J10GS1	10 mm	M-18	PNP	NO	
J10GS2				NC	
J10GR1			NPN	NO	
J10GR2				NC	
J20HS1	20 mm	M-30	PNP	NO	
J20HS2				NC	
J20HR1			NPN	NO	
J20HR2				NC	
J10GW1	10 mm	M-18	NA	NO	Voltage 20-250 V AC Max Load Current <500mA Voltage Drop <5V AC Leakage Current <1.5mA LED Indication, Switching Impulse Suppression, PVC Cable,
J10GW2				NC	
J20HW1	20 mm	M-30	NA	NO	
J20HW2				NC	

Solid State Relays

Single Phase Series

Type - DC to AC

Model No.	Max Load Current	O/P Voltage Drop	SALIENT FEATURES: <ul style="list-style-type: none"> • INPUT - 3 TO 32 VDC • OUTPUT VOLTAGE - 90 TO 480 VAC • LEAKAGE CURRENT - < 15mA • True Zero Cross Over • Virtually Free From EMI/RFI • Input LED Indication • Output To Body 4kv Isolation • Output No Configuration • Noiseless & Fast Switching • Inbuilt Snubber • Heatsink + Din Rail Mounting • Reverse polarity protection
SDA-3248-10	10 Amp	1.3 VAC	
SDA-3248-16	16 Amp	1.6 VAC	
SDA-3248-25	25 Amp	1.7 VAC	
SDA-3248-40	40 Amp	1.8 VAC	
SDA-3248-50	60 Amp	2.0 VAC	
SDA-3248-75	75 Amp	2.1 VAC	
SDA-3248-90	90 Amp	2.3 VAC	
SDA-3248-110	110 Amp	2.5 VAC	
SDA-3248-175	175 Amp	3 VAC	
SDA-3248-200	200 Amp	3.3 VAC	

Type - AC to AC

Model No.	Max Load Current	O/P Voltage Drop	SALIENT FEATURES: <ul style="list-style-type: none"> • INPUT - 90 TO 280 VAC • OUTPUT VOLTAGE - 90 TO 480 VAC • True Zero Cross Over • Virtually Free From EMI/RFI • Input LED Indication • Output To Body 4kv Isolation • Output No Configuration • Noiseless & Fast Switching • Inbuilt Snubber • Heatsink + Din Rail Mounting • Reverse polarity protection
SAA-3248-10	10 Amp	1.3 VAC	
SAA-3248-16	16 Amp	1.6 VAC	
SAA-3248-25	25 Amp	1.7 VAC	
SAA-3248-40	40 Amp	1.8 VAC	
SAA-3248-50	60 Amp	2.0 VAC	
SAA-3248-75	75 Amp	2.1 VAC	
SAA-3248-90	90 Amp	2.3 VAC	
SAA-3248-110	110 Amp	2.5 VAC	
SAA-3248-175	175 Amp	3 VAC	
SAA-3248-200	200 Amp	3.3 VAC	

Type - DC to DC

Model No.	I/P DC Voltage	O/P AC Voltage	Max Load Current	O/P Voltage Drop	Leakage I
SDD-3211-10	3-32 VDC	10-110 VDC	10 Amp	<5 VDC	04 mA
SDD-3211-16			16 Amp		
SDD-3211-25			25 Amp		
SDD-3211-50			50 Amp		

Single Phase Series

Type - Analogue Input



Model No.	Input	Output AC Voltage	Max Load Current
SAL-24-10	4-20 mA or 0-10 VDC	240 VAC Max	10 Amp
SAL-24-16			16 Amp
SAL-24-25			25 Amp
SAL-24-40			40 Amp

Type - Solid State Voltage Regulator (Phase Angle by POT)



Model No.	Input	Output AC Voltage	Max Load Current
SSVR-10	POT 480 kΩ	24-240 VAC	10 Amp
SSVR-16			16 Amp
SSVR-25			25 Amp
SSVR-40			40 Amp

Three Phase Series

Type - DC to AC



Model No.	I/P DC Voltage	O/P AC Voltage	Max Load Current	O/P Voltage Drop	Leakage Current
TDA-3248-10	3-32 VDC	90-480 VAC	10 Amp	1.3 VAC	15 mA
TDA-3248-16			16 Amp	1.6 VAC	
TDA-3248-25			25 Amp	1.7 VAC	
TDA-3248-40			40 Amp	1.8 VAC	

Type - AC to AC



Model No.	I/P DC Voltage	O/P AC Voltage	Max Load Current	O/P Voltage Drop	Leakage Current
TAA-2448-10	90-280 VAC	90-480 VAC	10 Amp	1.3 VAC	15 mA
TAA-2448-16			16 Amp	1.6 VAC	
TAA-2448-25			25 Amp	1.7 VAC	
TAA-2448-40			40 Amp	1.8 VAC	

FLOAT SWITCH



MODEL NO.	BARREL LENGTH (mm)	MOUNTING	MATERIAL	COMMON SPECS
VFS-34P	34	VERTICAL	BODY NYLON FLOAT POLYRETHENE	Switching Voltage: 200 VDC max Switching Current: 500 mA max Contact Resistance: 150 milli Ohms Operating Temp: -20 To 80 Deg C
VFS-55P	55			
VFS-80P	80			
HFS-01P	50	HORIZONTAL		

PID CONTROLLERS



DOUBLE SET POINT - DOUBLE DISPLAY

MODEL NO.	DIMENSIONS (MM)	DIGITS	CONTROL MODE	RESOLUTION	SENSOR RANGE	FEATURES
AT M8P	96x96x50	4+4	ON-OFF / PID	1 C for J & K / 0.1 C for RTD	-99 to 600 °C FOR J -99 to 1300 °C FOR K -99.9 to 399.9 °C for PT 100	SMPS SUPPLY 90 TO 270 VAC UNIVERSAL INPUT J / K / RTD SET POINT 1 - RELAY & SSR BOTH SET POINT 2 - CAN BE CONFIGURED AS a) ALARM OUT b) INDEPENDENT SET POINT c) SOAK TIMER
AT K8P	72x72x75					
AT N8P	48x48x85					
AT 66P	96x48x65	3+3				

TEMPERATURE



SINGLE SET POINT - SINGLE DISPLAY

MODEL NO.	DIMENSIONS (MM)	DIGITS	CONTROL MODE	RESOLUTION	SENSOR RANGE	FEATURES
TC M41	96x96x50	4	ON-OFF / AUTOTUNE	1 C for J & K / 0.1 C for RTD	-99 to 600 °c FOR J -99 to 1300 °c FOR K -99.9 to 399.9 c for PT 100	SMPS SUPPLY 90 TO 270 VAC UNIVERSAL INPUT J/K/ PT100 OUTPUT RELAY 7 AMP / SSR / BOTH
TC K41	72x72x75					
TC N41	48x48x85					
TC H41	48x96x65					
TC V41	96x48x65	3				
TC N31	48x48x85					



DOUBLE SET POINT - SINGLE DISPLAY

MODEL NO.	DIMENSIONS (MM)	DIGITS	CONTROL MODE	RESOLUTION	SENSOR RANGE	FEATURES
TC M42	96x96x50	4	ON-OFF / AUTOTUNE	1 C for J & K / 0.1 °C for RTD	-99 to 600 °c FOR J -99 to 1300 °c FOR K -99.9 to 399.9 °c for PT 100	SMPS SUPPLY 90 TO 270 VAC UNIVERSAL INPUT J/K/ PT100 OUTPUT RELAY 7 AMP / SSR / BOTH
TC K42	72x72x75					
TC N42	48x48x85					
TC H42	48x96x65	3				
TC V32	96x48x65					



POT TYPE (PUSH TO SET) CONTROLLER - SINGLE SET POINT - SINGLE DISPLAY

MODEL NO.	DIMENSIONS (MM)	DIGITS	CONTROL MODE	RESOLUTION	SENSOR RANGE	FEATURES
PTC - M41	96x96x65	4	ON - OFF MODE	1°C for J & K / 0.1°C for RTD	-99 to 600°C FOR J / -99 to 1300°C FOR K -99.9 to 399.9°C for PT100	SMPS SUPPLY 90 TO 270 VAC OUTPUT RELAY 7 AMP / SSR / BOTH
PTC - K41	72x72x65					



SINGLE SET POINT - DOUBLE DISPLAY

MODEL NO.	DIMENSIONS (MM)	DIGITS	CONTROL MODE	RESOLUTION	SENSOR RANGE	FEATURES
TC M81	96x96x50	4+4	ON-OFF / AUTOTUNE	1°C for J & K / 0.1°C for RTD	-99 to 600°C FOR J -99 to 1300°C FOR K -99.9 to 399.9°C for PT 100	SMPS SUPPLY 90 TO 270 VAC UNIVERSAL INPUT J/K/ PT100 OUTPUT RELAY 7 AMP / SSR / BOTH
TC K81	72x72x75					
TC N81	48x48x85	3+3				
TC V81	96x48x65					



SPECIAL PURPOSE CONTROLLERS

MODEL NO.	DIMENSIONS (MM)	DIGITS	CONTROL MODE	RESOLUTION	SET POINTS	SENSOR RANGE	FEATURES
TC - 144	96x96x65	4	ON - OFF MODE	0.1°C - RTD	4	-99.9 to 399.9°C - PT100	SMPS SUPPLY 90 TO 270 VAC OUTPUT RELAY 7 AMP / SSR / BOTH
HAND HELD INDICATOR	134x70x24		NA	1°C - Thermocouple 0.1°C - PT100	NA	-99.9°C to 1800°C	MULTI INPUT PT100 / J/K/R/S/T SENSORS



HUMIDITY CONTROLLERS

SINGLE SET POINT - SINGLE DISPLAY

MODEL NO.	DIMENSIONS (MM)	DIGITS	CONTROL MODE	RESOLUTION	SENSOR RANGE	FEATURES
H - M41	96x96x50	4	ON-OFF	0.1 % RH	CAPACITIVE TYPE SENSOR RANGE - 10 TO 95% RH	SMPS SUPPLY 90 TO 270 VAC
H - K41	72x72x75					CAPACITIVE SENSOR
H - N41	48x48x85					HUMIDITY - DE HUMIDITY MODE
H - 641	48x96x65					TIME DELAY FUNCTION / HYSTERISES
H - 931	36x72x70	3				OUTPUT RELAY 7 AMP / SSR / BOTH

Appreciating Quality Automation



SINGLE POINT - DOUBLE DISPLAY

MODEL NO.	DIMENSIONS (MM)	DIGITS	CONTROL MODE	RESOLUTION	SENSOR RANGE	FEATURES
H - M81	96x96x50	4+4	ON-OFF	0.1 % RH	CAPACITIVE TYPE SENSOR RANGE - 10 TO 95% RH	SMPS SUPPLY 90 TO 270 VAC CAPACITIVE SENSOR HUMIDITY - DE HUMIDITY MODE TIME DELAY FUNCTION / HYSTERISES OUTPUT RELAY 7 AMP / SSR / BOTH
H - K81	72x72x75					
H - N81	48x48x85					



HUMIDITY + TEMP CONTROLLER - DOUBLE DISPLAY

MODEL NO.	DIMENSIONS (MM)	DIGITS	CONTROL MODE	RESOLUTION	SENSOR RANGE	FEATURES
TH - M82	96x96x50	4+4	ON-OFF	0.1 % RH	CAPACITIVE TYPE SENSOR RANGE - 10 TO 95% RH TEMPERATURE SENSOR PT 100 -99.9°C TO 399.9°C deg	SMPS SUPPLY 90 TO 270 VAC CAPACITIVE SENSOR HUMIDITY - DE HUMIDITY MODE TIME DELAY FUNCTION / HYSTERISES OUTPUT RELAY 7 AMP / SSR / BOTH
TH - K82	72x72x75					
TH - N82	48x48x85					



COUNTER

EVENT COUNTER

MODEL NO.	DIMENSIONS (MM)	DIGITS	SET POINT	FEATURES
C - M6X	96X96X50	6	NA	INPUT SUPPLY 240 VAC / 24 VDC INPUT - PNP & NPN SELECTABLE CONTACT SWITCH, VOLTAGE PULSE FRONT AND BACK RESET HIGH & LOW SPEED MODE MEMORY - 10 YRS
C - K6X	72X72X50			
C - H6R	48X96X70			
C - 96X	36X72X70			
C - 86X	38X62X66			



PRESET COUNTER

MODEL NO.	DIMENSIONS (MM)	DIGITS	SET POINT	FEATURES
C - M81	96X96X50	4+4 DOUBLE DISPLAY	SINGLE	INPUT SUPPLY 240 VAC / 24 VDC INPUT - PNP & NPN SELECTABLE CONTACT SWITCH, VOLTAGE PULSE FRONT AND BACK RESET HIGH & LOW SPEED MODE SET POINT MEMORY - 10 YRS FRONT & BACK RESET MANUAL & AUTO RESET RELAY 7 amp @250 vac SOFT KEY SETTING SET VALUE DISPLAY
C - K81	72X72X50			
C - N81	48x48x85			



PROGRAMMABLE COUNTER

MODEL NO.	DIMENSIONS (MM)	DIGITS	SET POINT	FEATURES
C-M61	96X96X50	6	SINGLE	INPUT SUPPLY 240 VAC / 24 VDC INPUT - PNP & NPN SELECTABLE CONTACT SWITCH, VOLTAGE PULSE FRONT AND BACK RESET HIGH & LOW SPEED MODE MEMORY - 10 YRS FRONT AND BACK RESET MANUAL AND AUTO RESET RELAY 7 amp @ 250 vac SOFT KEY SETTING SCALE FACTOR - MULTIPLICATION DIVISION SELECTABLE RESOLUTION TOTALISE
C-K61	72X72X50			
C-H61	48X96X70			
C-N81	48X96X70			



PRESET COUNTER (THUMBWHEEL)

MODEL NO.	DIMENSIONS (MM)	DIGITS	SET POINT	FEATURES
C - M6TW	96X96X65	6	SINGLE	INPUT SUPPLY 240 VAC / 24 VDC INPUT - PNP & NPN SELECTABLE CONTACT SWITCH, VOLTAGE PULSE FRONT AND BACK RESET HIGH & LOW SPEED MODE MEMORY - 10 YRS FRONT AND BACK RESET MANUAL AND AUTO RESET RELAY 7 amp @ 250 vac SOFT KEY SETTING
C - K6TW	72X72X110			
C - M4TW	48X96X65	4	SINGLE	INPUT SUPPLY 240 VAC / 24 VDC INPUT - PNP & NPN SELECTABLE CONTACT SWITCH, VOLTAGE PULSE FRONT AND BACK RESET HIGH & LOW SPEED MODE MEMORY - 10 YRS FRONT AND BACK RESET MANUAL AND AUTO RESET RELAY 7 amp @ 250 vac SOFT KEY SETTING
C - K4TL	72X72X70			



LENGTH COUNTER

MODEL NO.	DIMENSIONS (MM)	DIGITS	FEATURES
LC-M101	96X96X50	6+4	INPUT SUPPLY 240 VAC / 24 VDC, MPM RANGE 999.9, DIA UPTO 9999.99, MEMORY, BATCH VIEW, AUTO RESET/MANUAL RESET FRONT & BACK, RELAY 7 AMP@230 VAC, SINGLE SET POINT
LC-K101	72X72X65		



BATCH COUNTER

MODEL NO.	DIMENSIONS (MM)	DIGITS	FEATURES
BC-M101	96X96X50	6+4	INPUT SUPPLY 240 VAC / 24 VDC, NPN/PNP PROXIMITY SWITCH / MICRO SWITCH / 230 VAC PULSE, MEMORY, BATCH VIEW, AUTO RESET/MANUAL RESET FRONT & BACK, RELAY 7 AMP@230 VAC, SINGLE SET POINT
BC-K101	72X72X65		



PROCESS INDICATOR / CONTROLLERS

MODEL NO.	DIMENSIONS (MM)	DIGITS	SET POINT	RESOLUTION	INPUT	FEATURES
PI-14X	96X96X70	4	NONE	SELECTABLE	0-10 VDC OR 0-20 mA	INPUT SUPPLY 240 VAC / 24 VDC 24VDC FOR SENSOR ANALOGUE LOW/HIGH DIGITAL LOW/ HIGH
PI-34K	72X72X110					
PI-64M	48X96X65		SINGLE			
PI-141	96X96X70					
PI-341	72X72X110					
PI-641	48X96X65					

TIMERS



PROGRAMMABLE TIMER

MODEL NO.	DIMENSIONS (MM)	DIGITS	SET POINT	FEATURES
T - M61	96X96X50	6	SINGLE	INPUT SUPPLY 240 VAC / 24 VDC RANGE - Hr : Min : Sec & Min : Sec : Milli Sec CYCLIC , ON DELAY , OFF DELAY UP TIME / DOWN TIME SELECTABLE TRIG- POWER ON / PULSE INPUT / GATED INPUT SELECTABLE
T - K61	72X72X50			
T - H61	48X96X70			



Double Display Timers - Cyclic & Delay Both

MODEL NO.	DIMENSIONS (MM)	DIGITS	SET POINT	FEATURES
T - M81	96X96X50	4+4 DOUBLE DISPLAY	SINGLE	INPUT SUPPLY 240 VAC / 24 VDC RANGE - 9999 / 999.9 / 99.99 Hr / Min / Sec Selectable UP TIME / DOWN TIME SELECTABLE MEMORY - SELECTABLE TRIG- POWER ON / PULSE INPUT / GATED INPUT SELECTABLE
T - K81	72X72X50			
T -N81	48x48x70			



ON / OFF DELAY TIMER (THUMBWHEEL)

MODEL NO.	DIMENSIONS (MM)	DIGITS	SET POINT	FEATURES
T - M3TH	96X96X65	3	SINGLE	INPUT SUPPLY 240 VAC / 24 VDC RANGE - 999 / 99.9 Min / Sec FRONT AND BACK RESET MEMORY - SELECTABLE
T - K3TH	72X72X65			
T - N3TH	48X48X85			



TIME TOTALISER

MODEL NO.	DIMENSIONS (MM)	DIGITS	FEATURES
T - H6X	48X96X65	6	INPUT SUPPLY 240 VAC / 24 VDC RANGE - 999999 / 99999.9 Hr. / Min / Sec BACK RESET MEMORY - 10 Yrs.
T - 96X	36X72X70		



FORWARD . REVERSE / LAUNDRY / HYDRAULIC TIMER

MODEL NO.	DIMENSIONS (MM)	DIGITS	FEATURES
FR-M82	96X96X50	4+4	INPUT SUPPLY 240 VAC / 24 VDC, NPN/PNP PROXIMITY & MICRO SWITCH, MEMORY SELECTABLE AUTO RESET/MANUAL RESET FRONT & BACK, 2 RELAY, 7 AMP@230 VAC, SINGLE SET POINT
FR-K82	72X72X65		



LOAD CELL INDICATORS & CONTROLLERS

MODEL NO.	DIMENSIONS (MM)	DIGITS	SET POINT	RESOLUTION	FEATURES
WI - 15M	96x96x85	5	NONE	SELECTABLE	INPUT SUPPLY 240 VAC / 24 VDC SENSOR - LOAD CELL AUTO CALIBRATION TARE - FRONT AND BACK PEAK HOLD
WC - 15M1		5+5	SINGLE		
WC - 15M2			DOUBLE		
WC - 15M3			TRIPLE		



RPM

INDICATORS

MODEL NO.	DIMENSIONS (MM)	DIGITS	FEATURES
C-H6R	48X96X65	4	INPUT SUPPLY 240 VAC / 24 VDC INPUT - PNP & NPN SELECTABLE CONTACT SWITCH, VOLTAGE PULSE HIGH & LOW SPEED MODE
R - 34X	72X72X65		
R - 94X	36X72X70		



RPM CONTROLLERS

MODEL NO.	DIMENSIONS (MM)	DIGITS	FEATURES
R - M61	96X96X65	6	INPUT SUPPLY 240 VAC / 24 VDC INPUT - PNP & NPN SELECTABLE CONTACT SWITCH, VOLTAGE PULSE, LOW & HIGH SET POINT
R - K61	72X72X65		
R - H61	48X96X65		

DIGITAL PANEL METERS



AC VOLT METER

MODEL NO.	DIMENSIONS (MM)	AUX VOLTAGE	DIGITS	VOLTAGE RANGE	RESOLUTION
PM-H3V	48X96X70	STANDARD 180 TO 250 VAC ON DEMAND 12/24/48 VDC 110 VAC	3 1/2 DIGITS	0 TO 500 VAC	1 VOLT
PM-M3V	96X96X50		SIZE 0.56"		
PM-K3V	72X72X50				



AC CURRENT METER

MODEL NO.	DIMENSIONS (MM)	AUX VOLTAGE	DIGITS	AMPERE RANGE	RESOLUTION
PM-H3A	48X96X70	STANDARD 180 TO 250 VAC ON DEMAND 12/24/48 VDC 110 VAC	3 1/2 DIGITS	0 TO 4000 Amp with programmable CT Ratio	1 Amp
PM-M3A	96X96X50		SIZE 0.56"		
PM-K3A	72X72X50				



VOLT + CURRENT METERS

MODEL NO.	DIMENSIONS (MM)	AUX VOLTAGE	DIGITS	RANGE	RESOLUTION
PM-H3VA	48X96X70	STANDARD 180 TO 250 VAC ON DEMAND 12/24/48 VDC 110 VAC	3 1/2 DIGITS	Voltage: 0-500 VAC Current: 0 TO 4000 Amp with programmable CT Ratio	1 Unit
PM-M3VA	96X96X50		SIZE 0.56"		
PM-K3VA	72X72X50				



DC DRIVE

MODEL NO.	DIMENSIONS (MM)	AUX VOLTAGE	Setting	Type	Output (In HP)
DDM5	96x96x110	STANDARD 180 TO 250 VAC	THROUGH FRONT PANEL KNOB	SHUNT / PMDC	1 HP
DDM5-1					5 HP



TEMPERATURE INDICATOR

MODEL NO.	DIMENSIONS (MM)	AUX VOLTAGE	DIGITS	SENSOR RANGE	RESOLUTION
PM-64 TI	48X96X65	STANDARD 180 TO 250 VAC ON DEMAND 12/24/48 VDC 110 VAC	3 1/2 DIGITS	J TYPE 0 TO 600°C K TYPE 0 to 1200°C RTD (PT 100) -50 to 400°C	FOR J & K 1°C
PM 14 TI	96X96X70		SIZE 0.56"		RTD (Pt100) 0.1°C or 1°C On Demand
PM 34 TI	72X72X65				



DIN RAIL TIMER

MODEL NO.	TYPE	RANGE	RELAY	RESET	SUPPLY VOLTAGE	INDICATIONS
4S	SINGLE RANGE ON DELAY	3/10/30/60 sec	SINGLE C/O	POWER ON RESET (<100mS)	220 VAC DEFAULT 24VDC/110VAC/440VAC ON DEMAND	POWER ON & RELAY ON LED INDICATION
4MS	MULTI RANGE ON / INTERVAL DELAY	15/60 Sec 7.5/60 Min	SINGLE C/O TWO C/O ON DEMAND			
4SD	DUAL RANGE STAR DELTA	RUN UP TIME 30 / 60 Sec PAUSE TIME 50 / 100 mSec	SINGLE C/O EACH FOR STAR & DELTA			



SOLID STATE BUZZER

AVAILABLE FOR 24 VDC/AC TO 240 VAC
 DIMENSIONS (mm) = 96X96X70
 SINGLE TONE & MULTI TONE AVAILABLE



Appreciating Quality Automation



DOLPHIN AUTOMATION

A2/86, SITE - V (NEAR KASNA)

UPSIDC, GREATER NOIDA - 201308

Phone: 0120-2341839, 9810079611, 9810879611

E-mail: dolphinautomation9@gmail.com

Website: www.dolphinautomation.com

